



PERSHING 7X

PRODUCT GUIDE



FEATURES

MAIN DESIGN HIGHLIGHTS

- X generation new model
- Coupé concept
- New Alu-Silver painting
- New master cabin hull windows design

MAIN CONSTRUCTION HIGHLIGHTS

- Carbon + Epoxy superstructure
- Carbon + Vinylester hull & deck
- Lightened components
- Certification CE A

MAIN TECH & PERFORMANCE HIGHLIGHTS

- Engines: 2 x MAN V12 1800
- New Top System Surfaces Drives especially made for 7X
- Top speed 50 knots
- Joystick & DPS

MAIN SPACE FUNCTIONAL CONCEPT

- EU/OPT layouts
- Large storage on board
- Smart use of space

PRELIMINARY

LOA	m/ft	21,11 69'3"
LH	m/ft	20,27 66'6"
LWL	m/ft	16,13 52'11"
BEAM	m/ft	5,35 17'6"
DRAFT	m/ft	1,52 5'0"
LADEN DISPLACEMENT	t/lb	42 92594
UNLADEN DISPLACEMENT	t/lb	35 77162
FUEL TANK	l/us gal	3600 951
FRESH WATER TANK	l/us gal	800 211

ENGINE | POWER std 2 x MAN V12 1800

MAX SPEED	knots	50
CRUISING SPEED	knots	42

TOTAL GUEST BERTHS	std opt	6 4
GUEST CABIN	std opt	3 2
GUEST HEAD		3
MASTER CABIN POSITION		LOWER DECK
FULL BEAM MASTER CABIN		YES

TOTAL CREW BERTHS		1
CREW CABIN		1
CREW HEAD		1

**TECHNICAL
SPECS**

HULL TYPE: WARPED HULL WITH SPRAY RAILS AND AFT DEAD RISE 17°

H=OVERALL HEIGHT FROM KEEL TO ANCHOR LIGHT 7,07 m/ft 23'2"

P= PULPIT + TRANSOM 0,84 m/ft 2'9"

THE PERFORMANCE IS ESTIMATED AT THE FOLLOWING CONDITIONS: STANDARD VERSION DISPLACEMENT OF THE YACHT AT 1/3 LOAD, CLEAN HULL, 25°C AIR TEMPERATURE GOOD WEATHER CONDITIONS, 8 PEOPLE ON BOARD. 37,1 t/lb. 81736

OVERLOADING THE YACHT BY:
TOP SPEED DECREASES OF: 1,5 t/lb. 3307
1 knot

STABILIZATION (OPT): 2 x SEAKEEPER NG6

PERFORMANCE COMPARISON

P62 VS P70 VS P7X



PERSHING 7X



PERSHING 70



PERSHING 62

VS.
PERSHING

TECHNICAL DATA	P62	P70	P7X
Engine x 2	MAN V12 1550	MTU 10V 2000 M96L	MAN V12 1800
Power x 1	1550	1623	1800
Max Speed	48	46	50
Cruising Speed	42	40	42
Range (max speed)	250	250	260
Range (cruising speed)	280	280	300
Displacement (laden)	39,35 86747	45,17 99583	42 92594
Displacement (unladen)	33,70 74296	38,45 84768	35 77162

COUPÉ / SPORTFLY

65-70 FT



PERSHING 7X



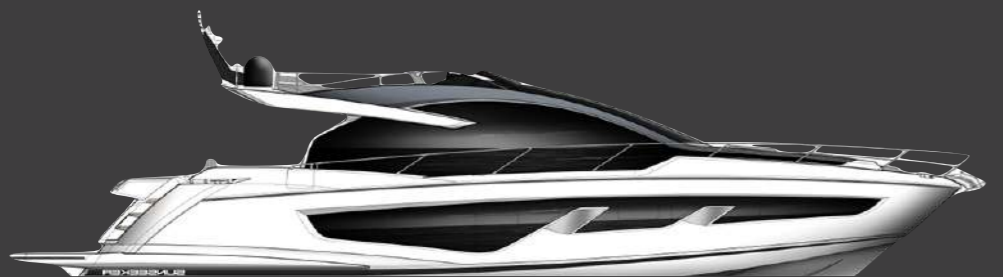
PRINCESS V65



PRINCESS S66

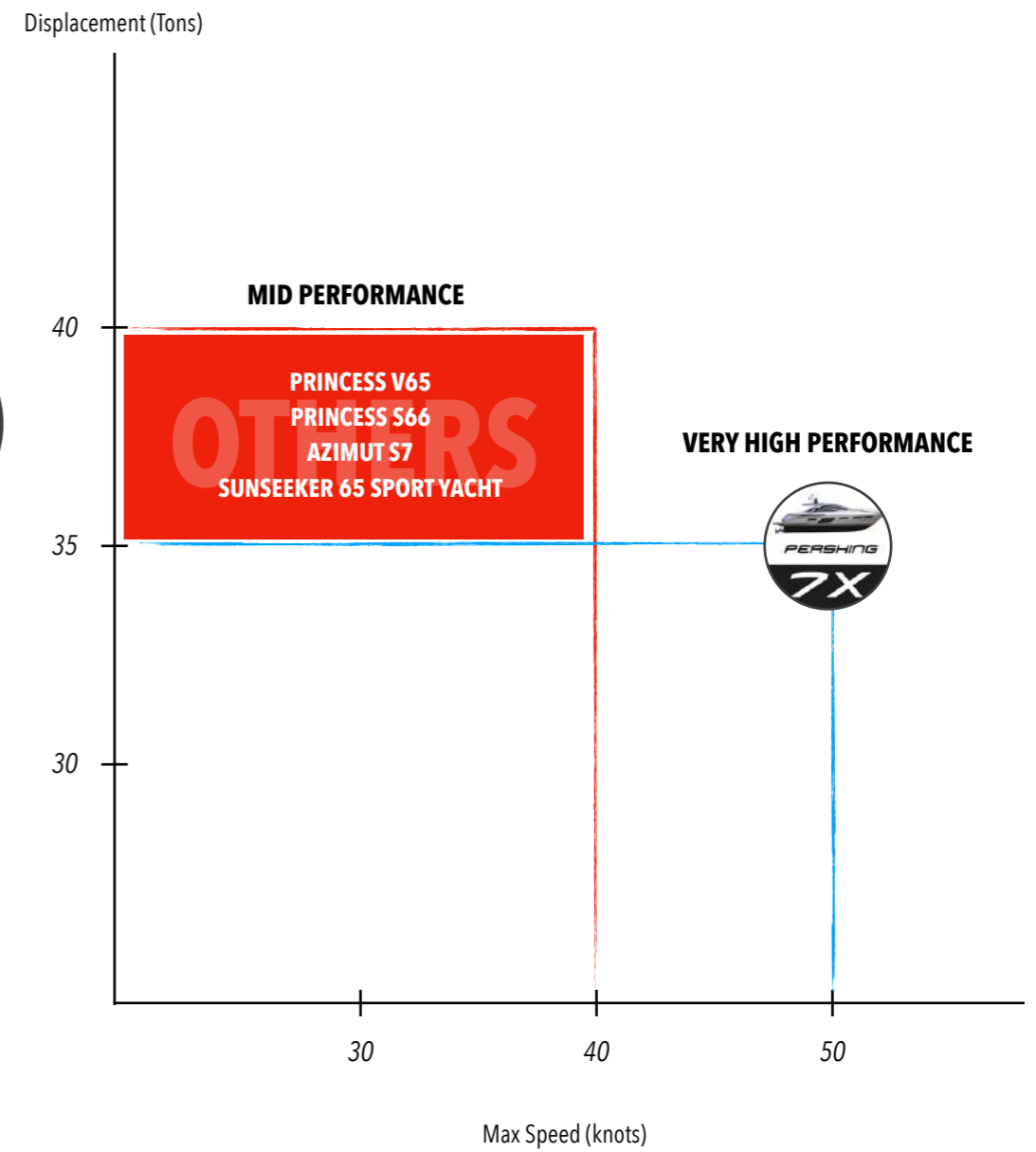


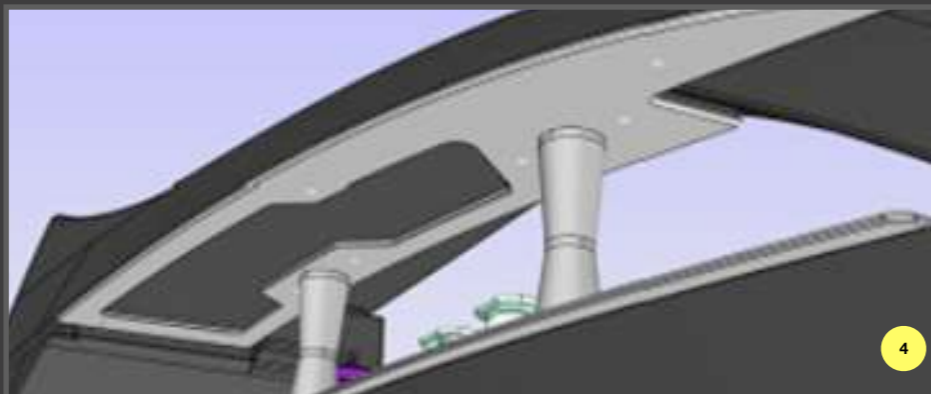
AZIMUT S7



SUNSEEKER 65 SPORT YACHT

VS.
OTHERS





**PRODUCTION
TECHNOLOGY**

LIGHTENED COMPONENTS LIGHTENED CONSTRUCTION

1. LIGHTENED CONSTRUCTION

- Carbon + Epoxy superstructure
- Carbon + Vinylester hull & deck

2. LIGHTENED WOODEN STRUCTURE AND FURNITURE

- The joinery is made completely of lightened LARIMAR panels
- With a weight saving of about 1.5 ton

3. LARIMAR PANELS

- PVC core covered with two Okoume sheets

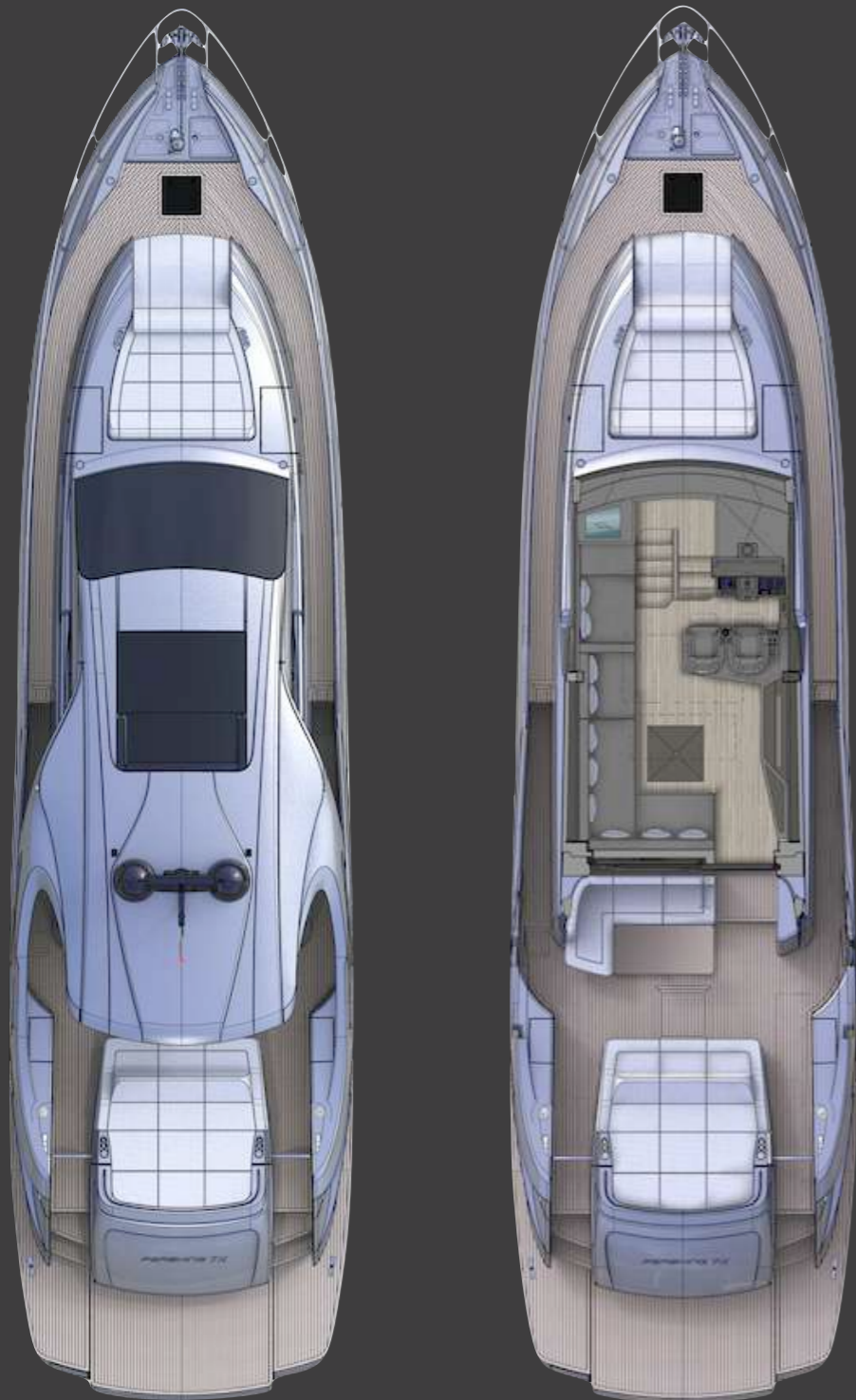
4. LIGHTENED METAL

- The extensive use of aluminum
- Aluminum is more precious & light than steel
- E.g the emptied stern fairleads
- E.g the electric windows are in aluminum
- E.g the saloon door has an aluminum frame



PROFILE





MAIN DECK

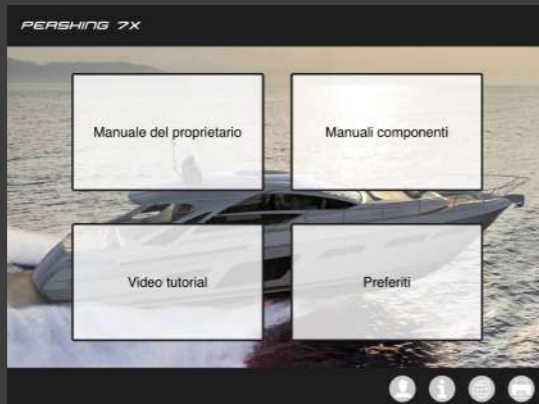
**GENERAL
ARRANGEMENT**



LOWER DECK
3 CABINS



LOWER DECK
2 CABINS + LD SALON



DIGITAL MANUAL

DIGITAL MANUAL

Digital manual

- Developed by Ferretti Group engineering department;
- To help the crew to quickly understand the use of the yacht;
- Perfectly replaced the old thick paper manuals;
- Easy to use with highly recognisable icon;



Digital manual icon



Search by general arrangement



Search by contents



Search by test



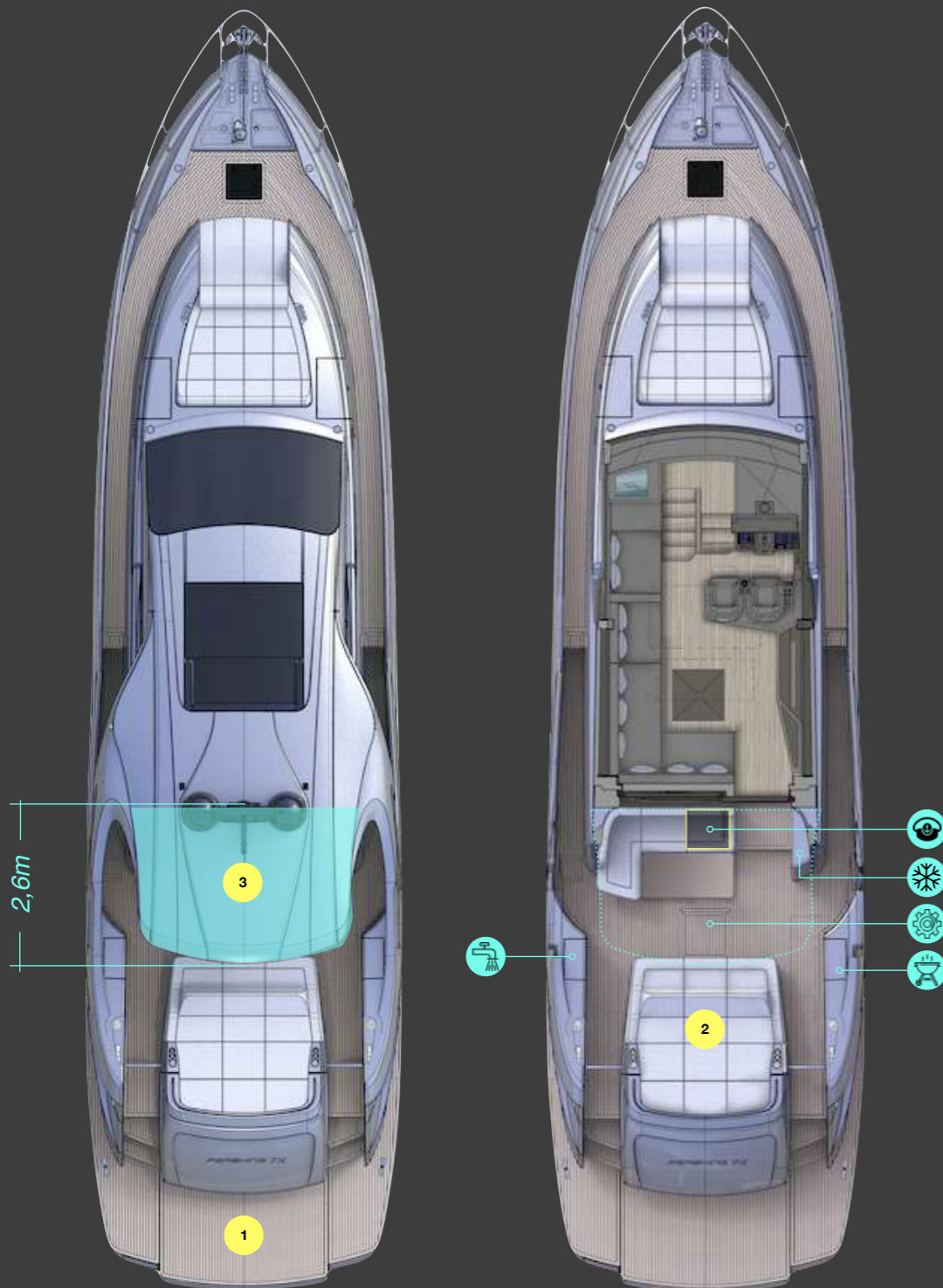
Tutorial video



Component manual



Favoriets



**MAIN DECK
EXTERIOR**

COCKPIT

19m²

AFT BEACH AREA

7m²

1. STERN

- Extended fixed platform 4,66 x 1,52 m;

2. COCKPIT

- Sun pad (2600 x 2714mm) with integrated sofa for 4 people;
- Sink built into the structure with storage underneath (port side);
- BBQ (OPT) with storage underneath (starboard side);
- Engine room access "⚙️";
- Corner sofa beside the salon entrance with OPT hi-lo table and crew access underneath (sofa can be transformed into the 2nd sun pad);
- Side wings with darkened glass;
- Storage furniture built into the superstructure (an OPT ice maker or a mini fridge can be installed);
- Sidewalk width under side wing: up to 600mm;



3. SUPERSTRUCTURE AFT

- Extends for 2,6m above the cockpit, shading the entire dining area;
- Possibility to have the sunshade with carbon poles to cover the aft sun pad;



STERN



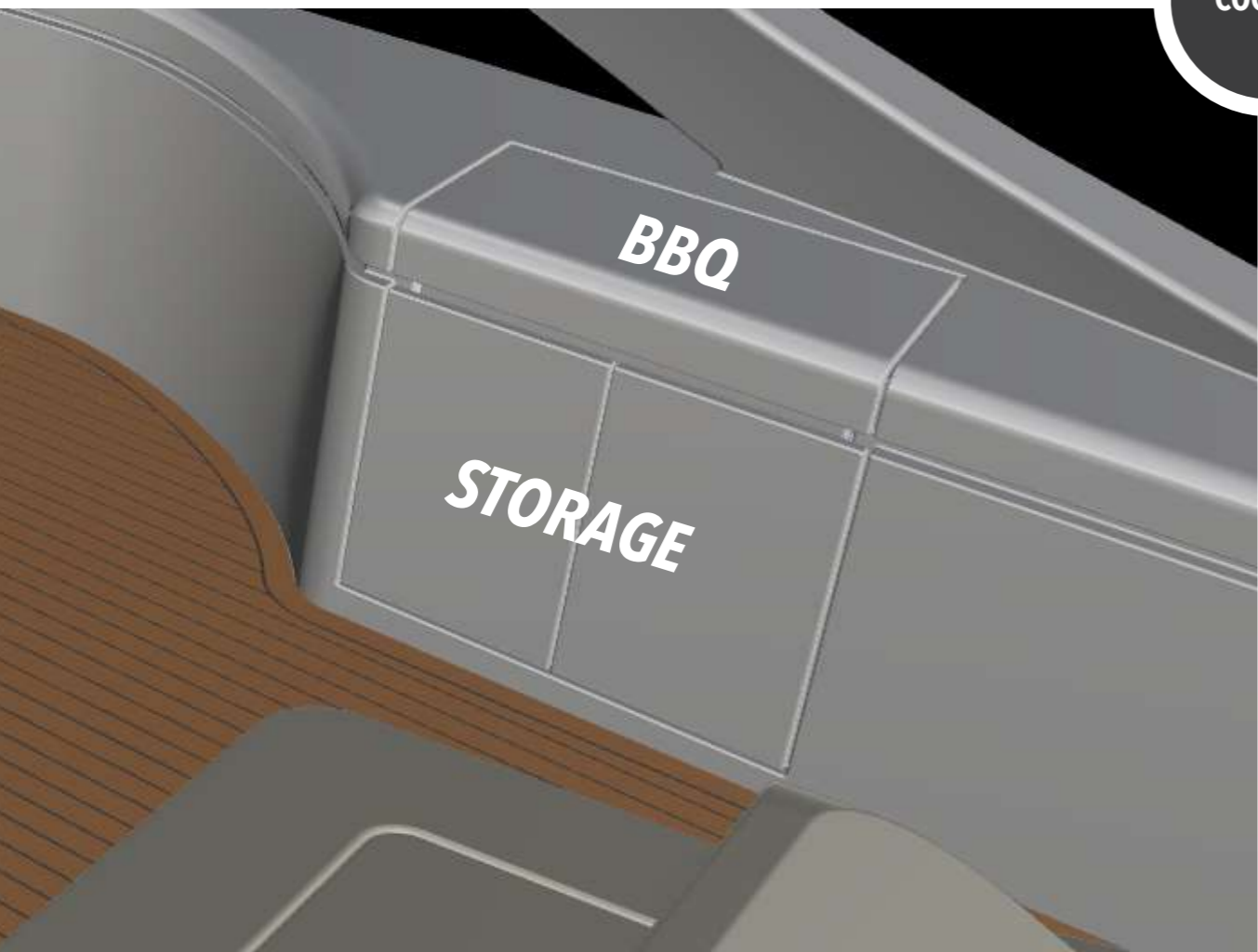
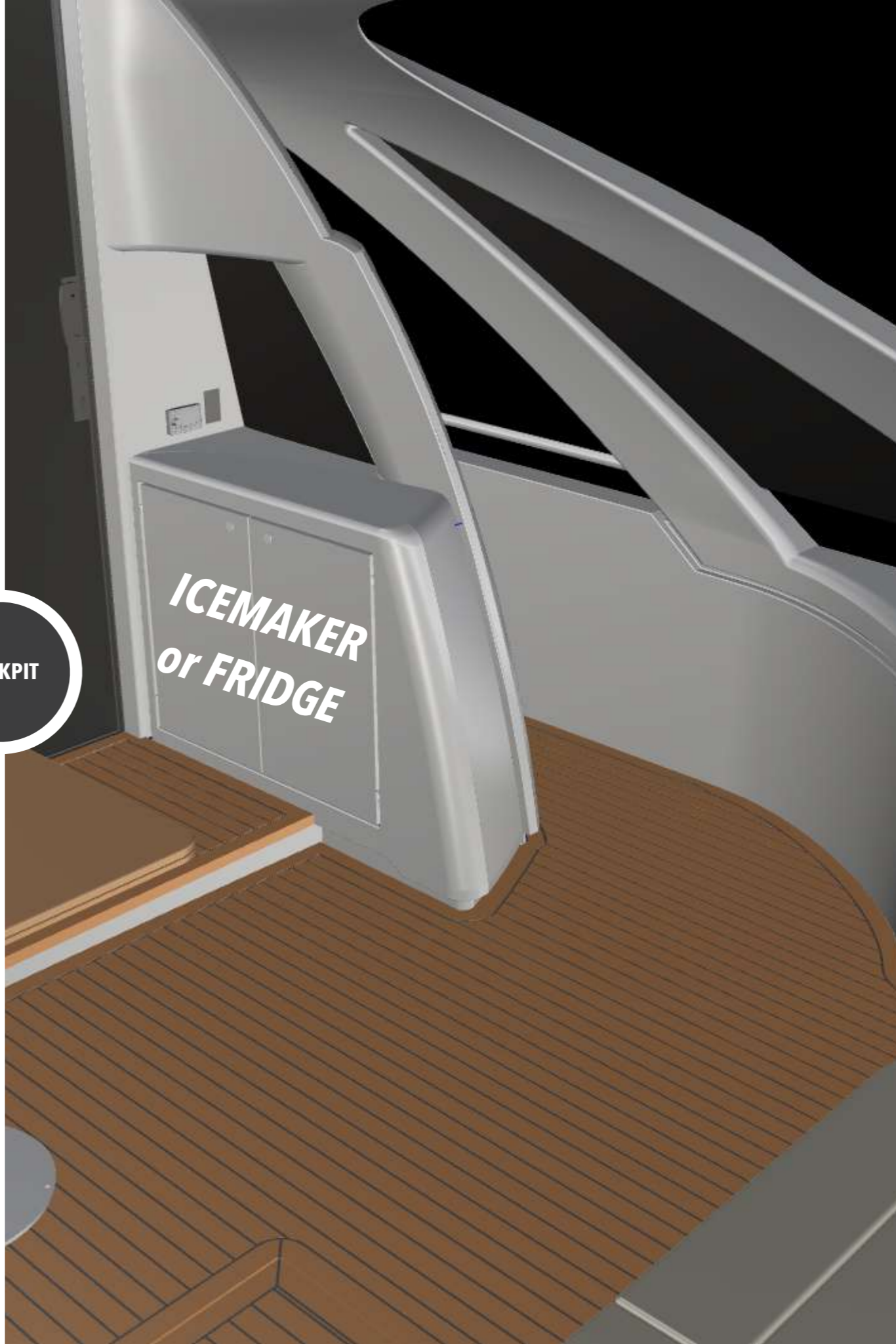


COCKPIT



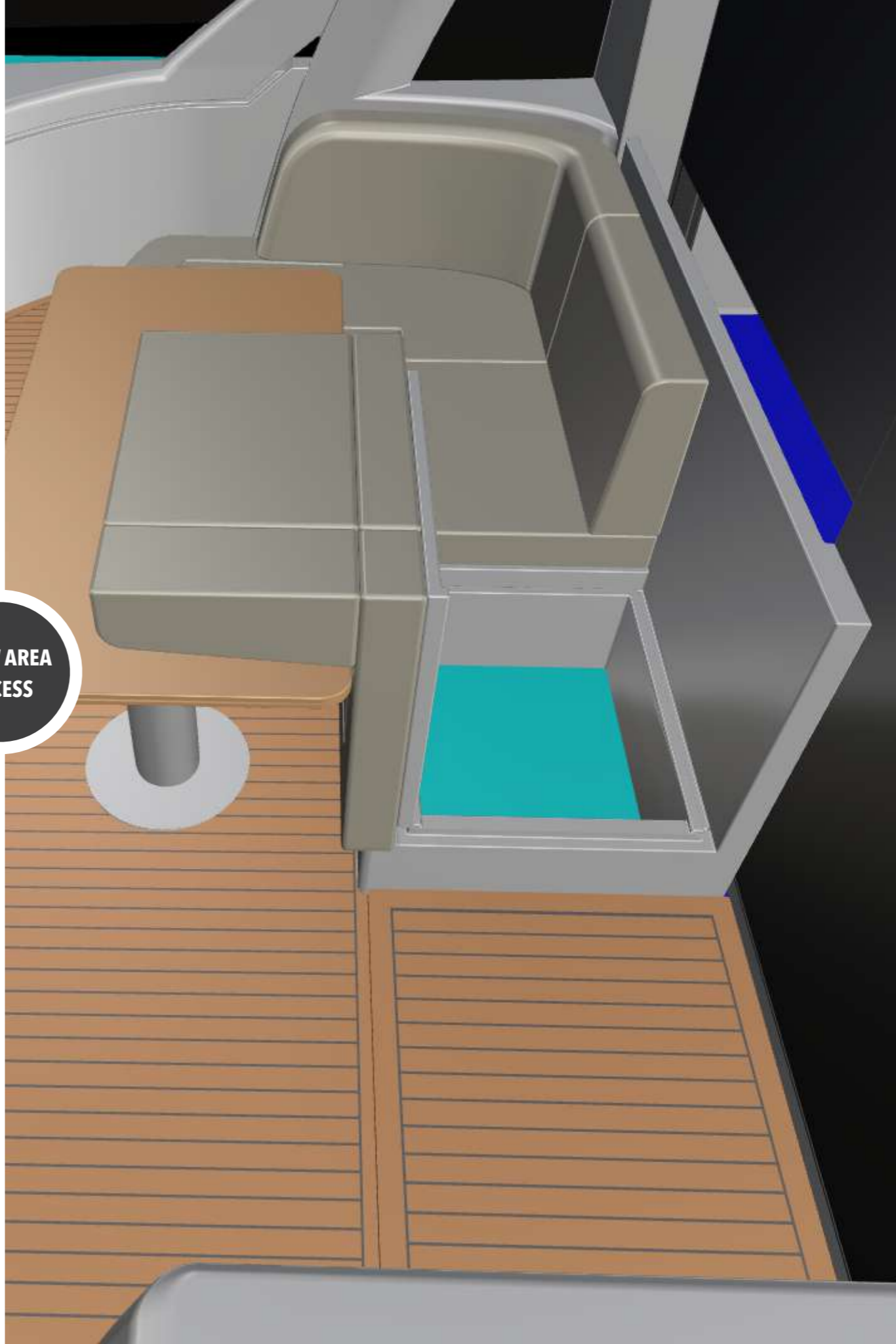


COCKPIT





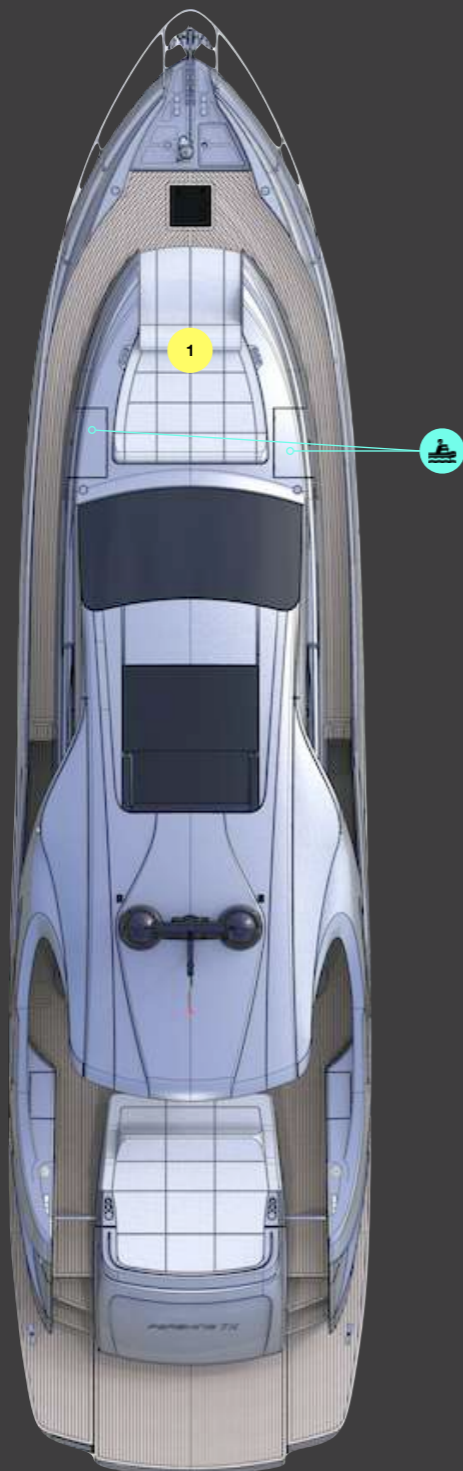
**CREW AREA
ACCESS**





AIR INTAKES





MAIN DECK
EXTERIOR

BOW AREA

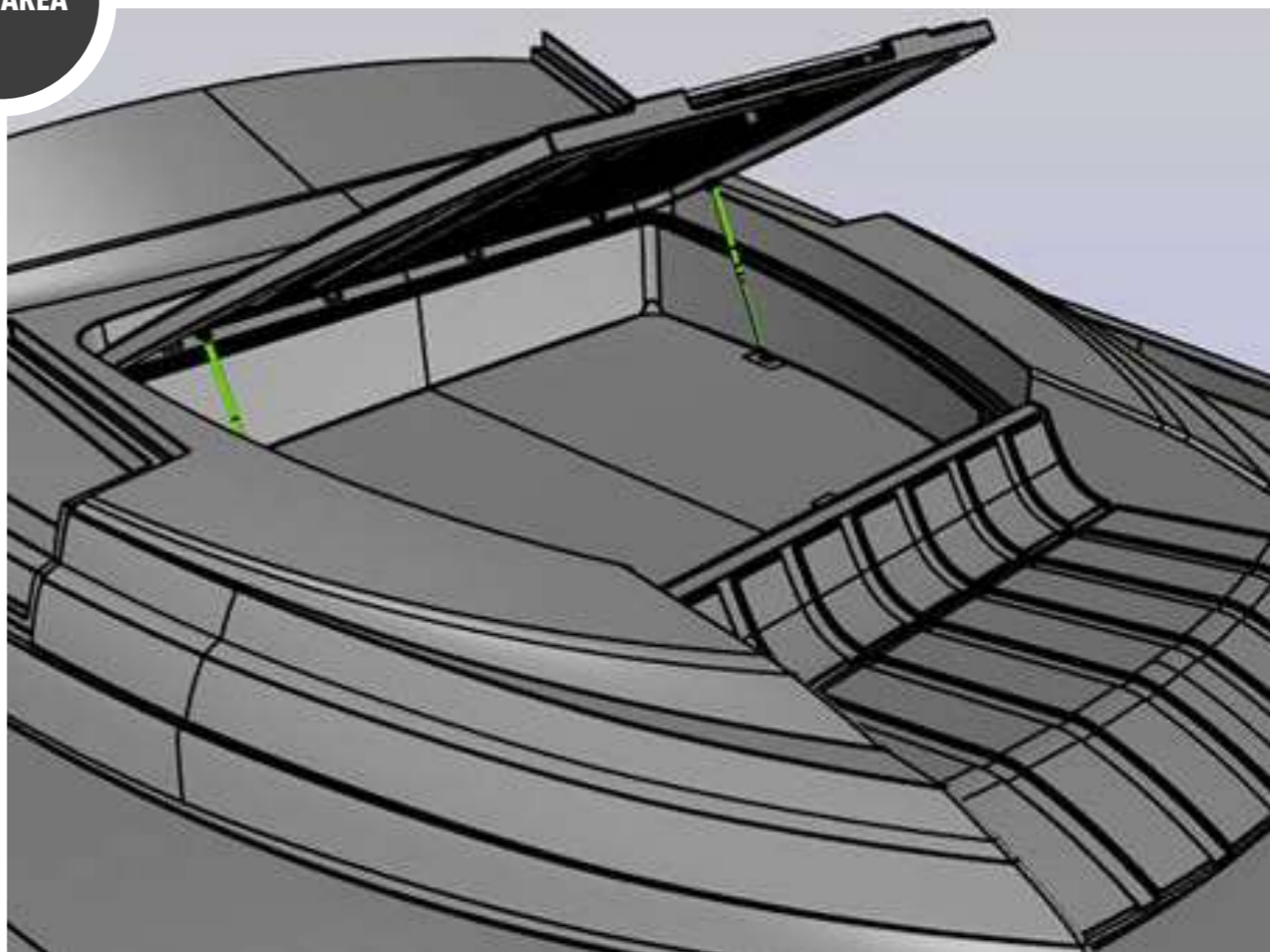
5,6m²

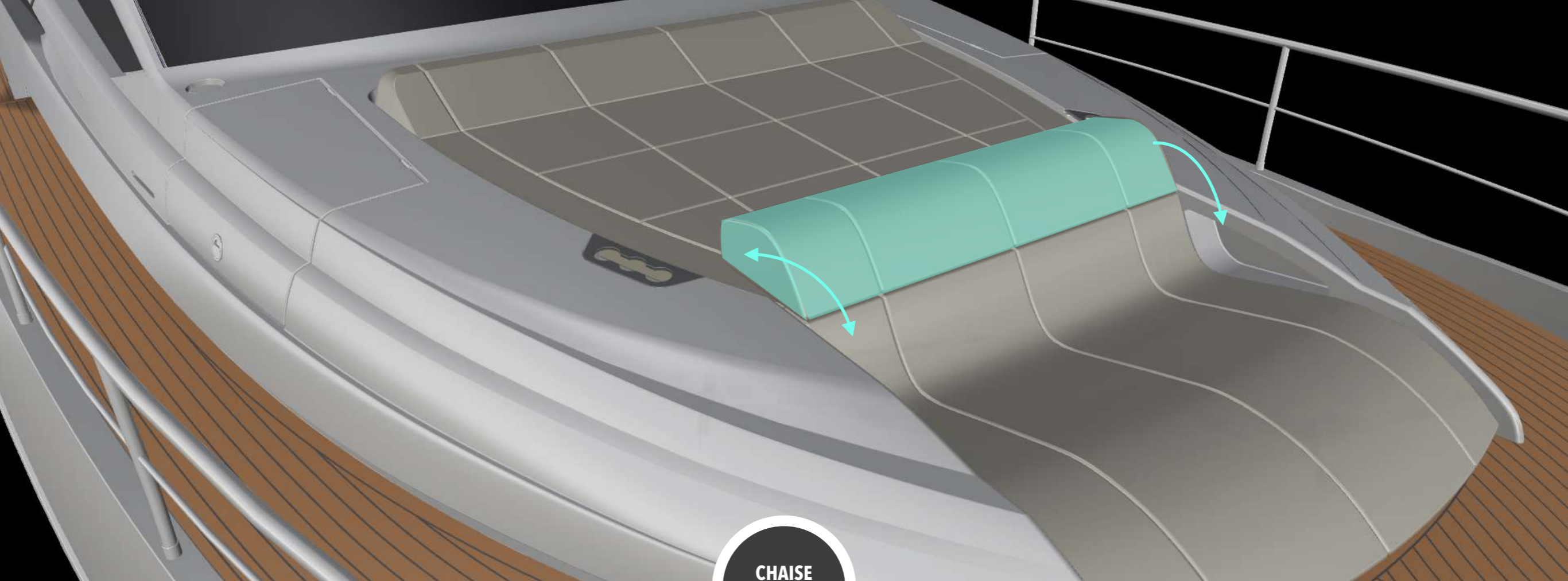
1. BOW

- Life rafts storage on each side;
- Sun pad (3155 x 2220mm) connected with the fwd chaise longue;
- Chaise longue with flipping headrest (it can be used as an extension of the sun pad);
- Full storage 848 lt under the sun pad;
- Sunshade with carbon poles (OPT);

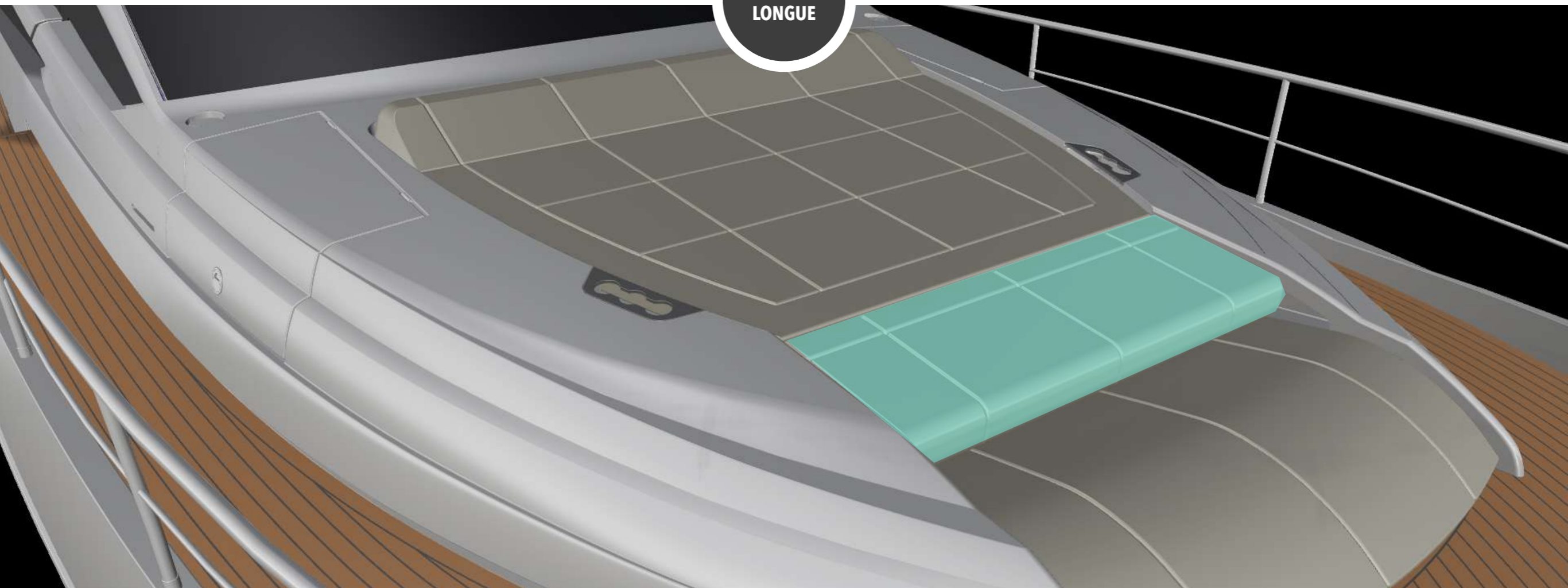


BOW AREA



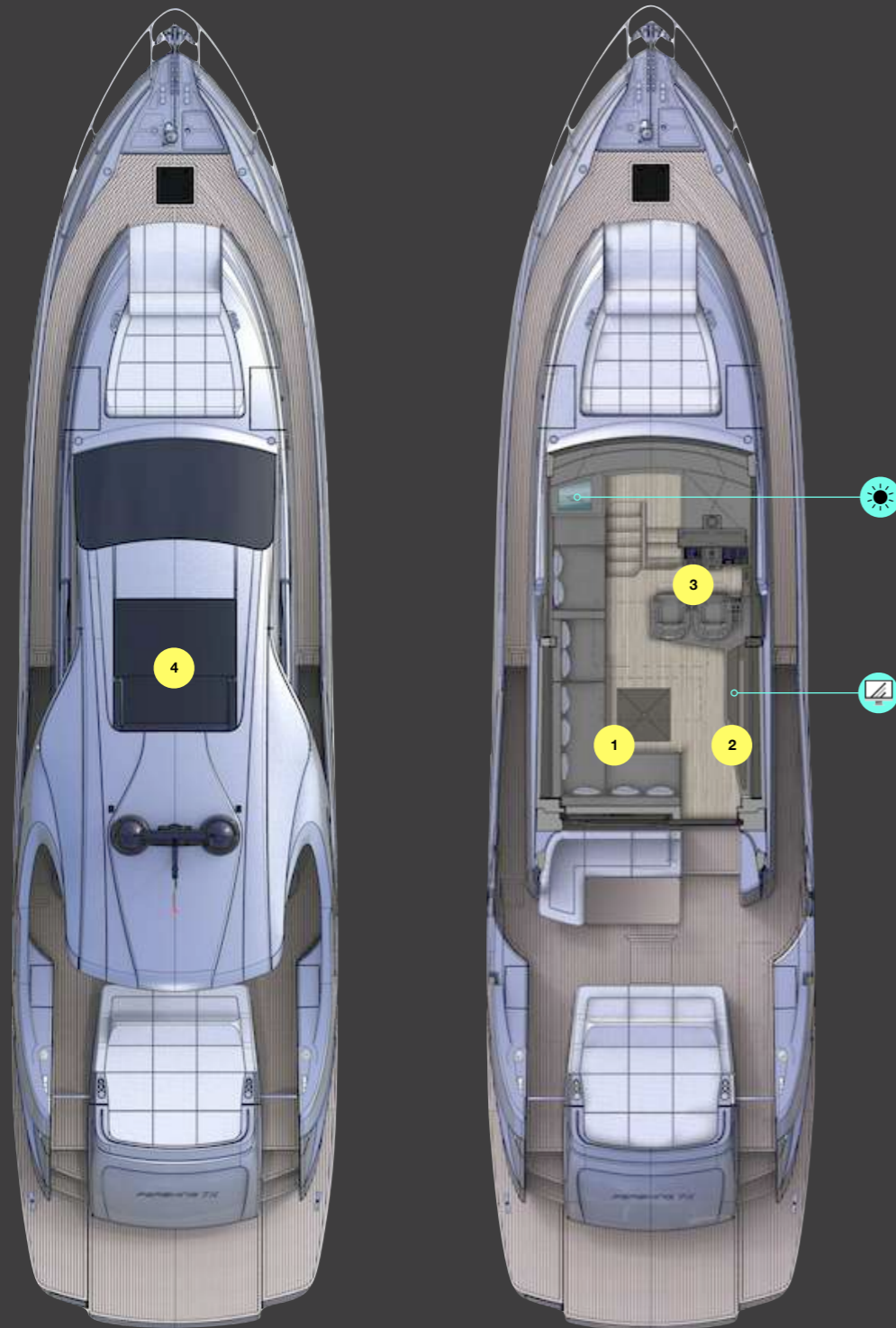


CHAISE
LONGUE



MAIN SALON

12,5m²



MAIN DECK INTERIOR

1. SALON

- Oversized salon windows provide extra natural light;
- Salon height 2m;
- Hideaway sliding aft door;
- L shaped sofa with drawer storage 950lt underneath;
- FWD chaise longue connected with sofa and electric lifting side window;
- Skylight for LD galley;

2. STORAGE FURNITURE

- Dinner sets storage;
- TV up to 49" (OPT);

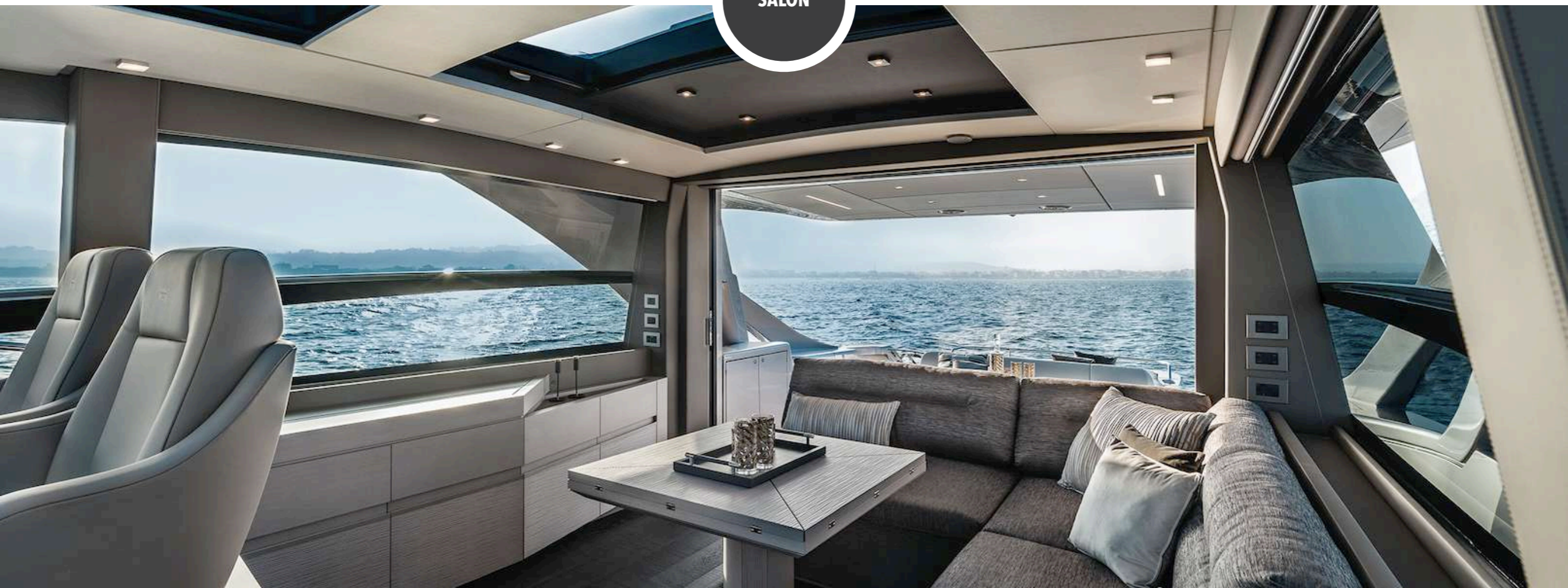
3. HELM STATION

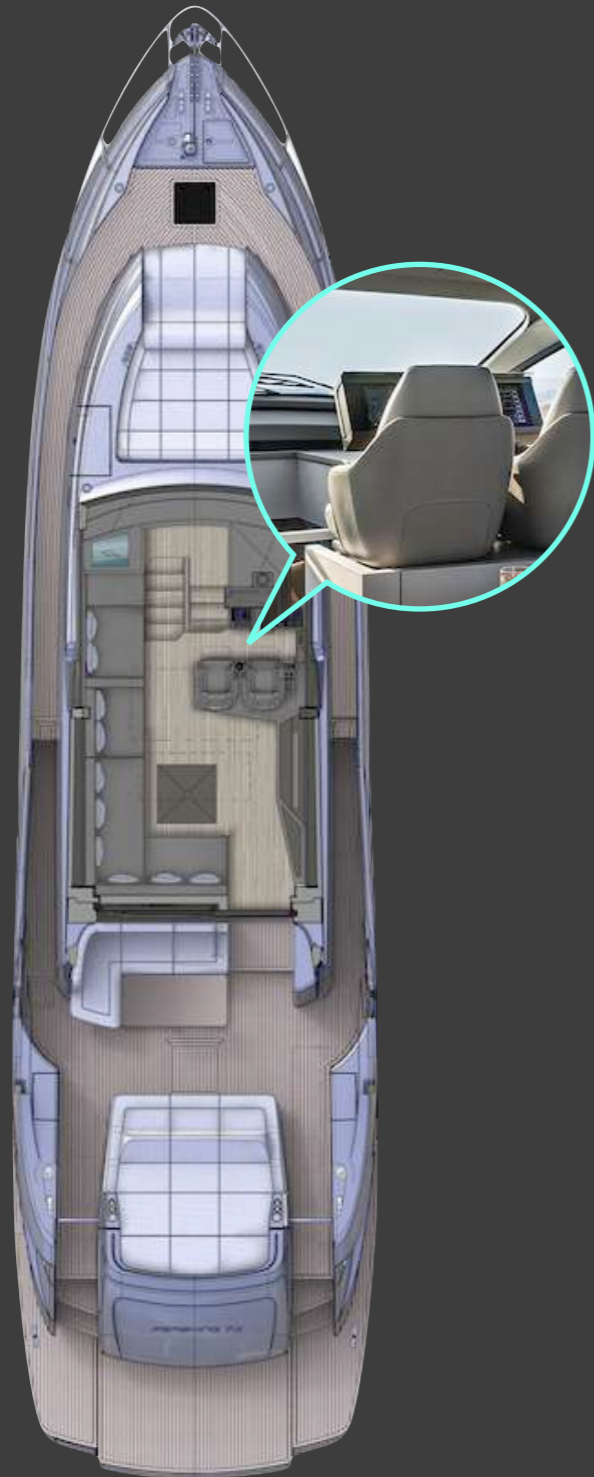
4. OPENABLE ROOF

- Automatic openable darkened glass top;



SALON





MAIN DECK
INTERIOR

HELM STATION

CONFIGURATION

1. HELM STATION

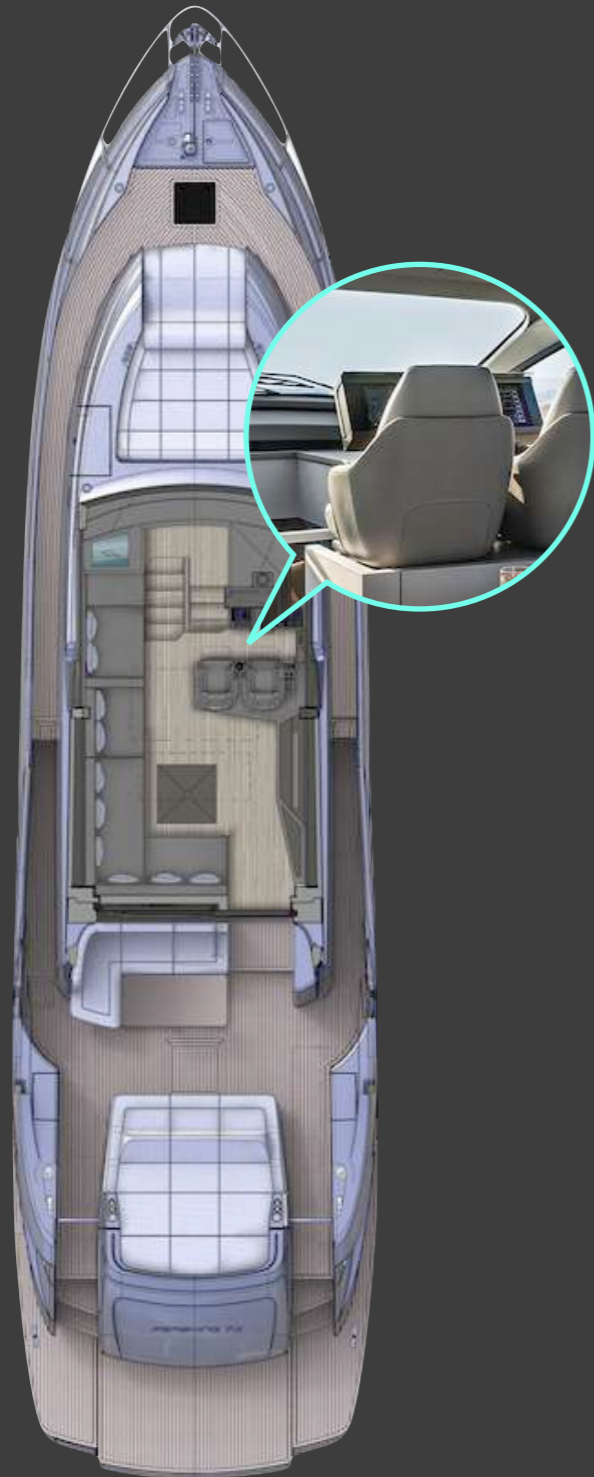
- Single piece windshield;
- 2 separate pilot seats with storage furniture underneath;
- Ultra thin dashboard with double touchscreen;
- 1 port USB socket;
- Electric lifting side windows;
- Double control tunnels next to the pilot seats with joystick and throttle;

2. NAVIOP + SIMRAD INTEGRATED DASHBOARD

- Integrated optimised management;
- Single intuitive and easy to use HMI (Human Machine Interface) that can be customised and adopted in every situation;
- The "Multicontrol system" allows full control of the different devices (radar, plotter, autopilot, engines, fuel level, pumps, etc) through a single device with one logic and interface;
- Perfect balance between electronic, aesthetic and ergonomic aspects simplifies the management of the ship's navigation and control system;

3. DISPLAY CONFIGURATION

- STD: touchscreen 12" x 2;
- OPT: touchscreen 19" x 2;
- Display for Surface Drive system 7" x 1;



MAIN DECK
INTERIOR

HELM STATION

SYSTEM

1. TOP SYSTEM EASY SET (OPT)

- Allows to control automatically trims and trim tabs;

2. ELECTRO-HYDRAULIC STEER-BY-WIRE SYSTEM

- Turns the boat without any stress;
- Dedicated interface;
- Controls the drives;

3. MANOEUVRING SYSTEM "JOYSTICK (OPT) + SURFACE DRIVES"

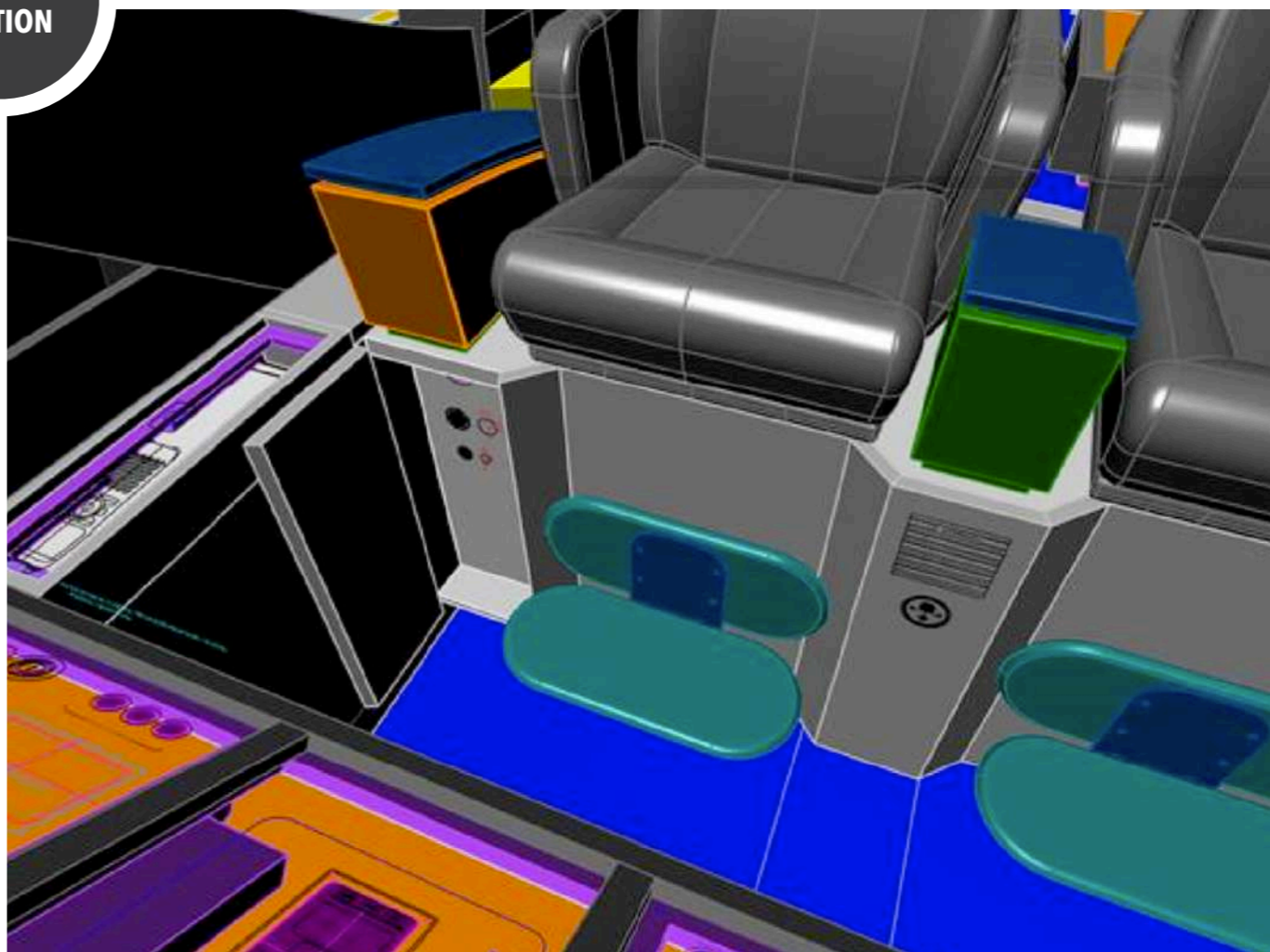
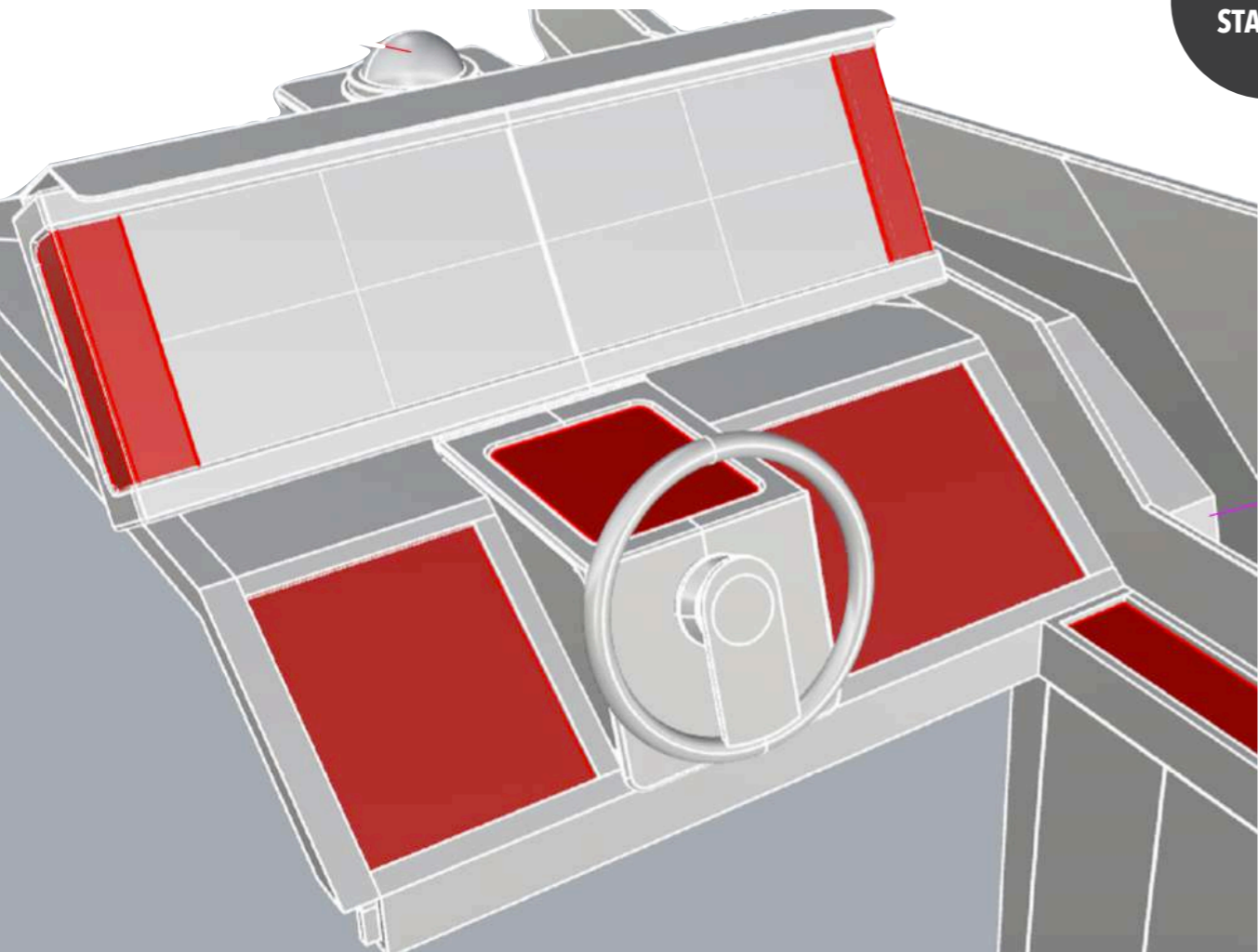
- User friendly, safe & reliable;
- Easy handling;
- Accurate during manoeuvring;
- Extremely intuitive responsiveness;
- Automatic compensation of wind effect;

4. DPS DYNAMIC POSITIONING SYSTEM (OPT)

- Maintains position;
- Transform GPS data into steering angles, gear shifts and throttle positions to keep the boat stand still;



HELM
STATION

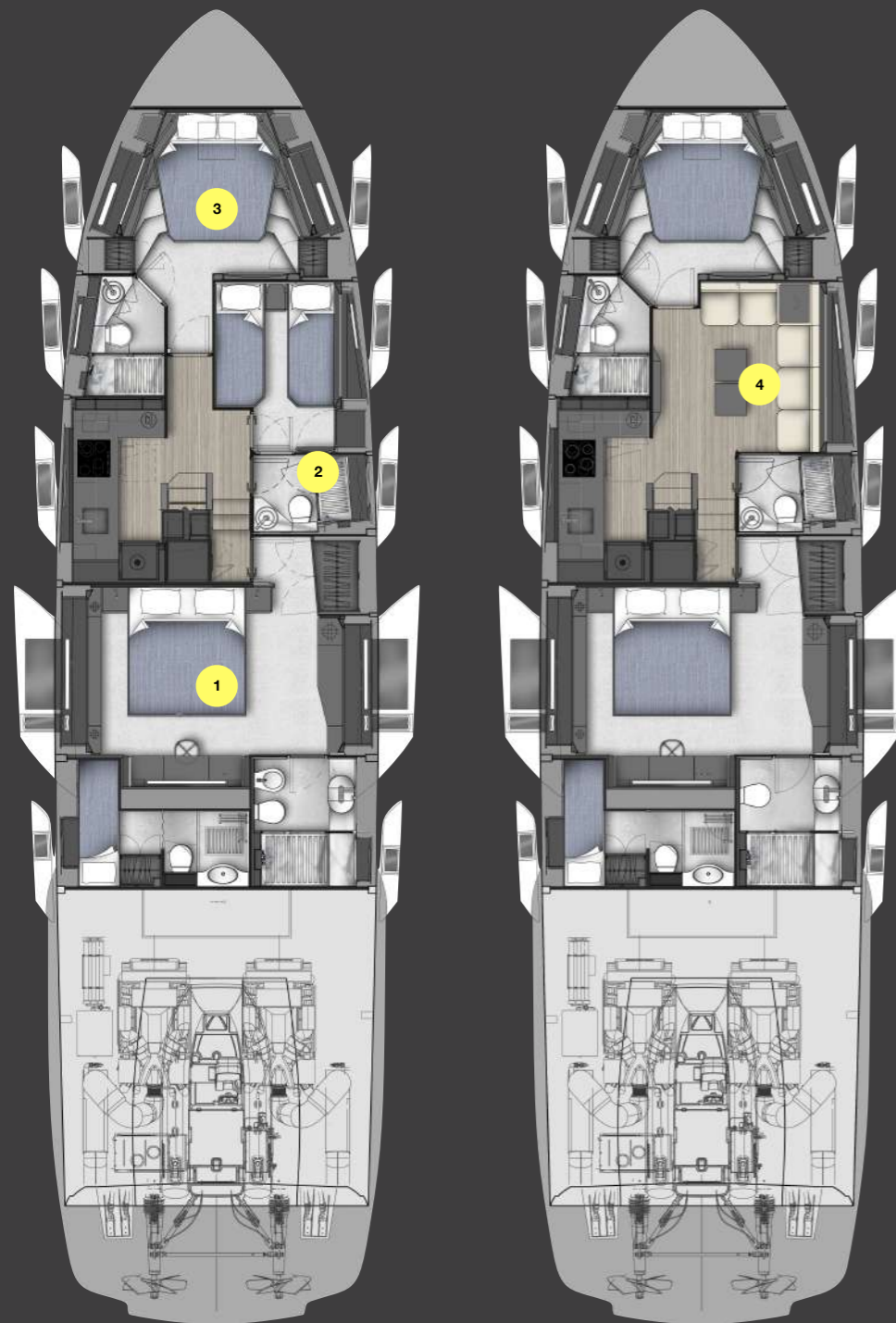


MASTER CABIN + HEAD

16m²

GUEST AREA + HEADS

18m²



LOWER DECK

1. MASTER CABIN

- Full beam;
- Master cabin height: 2m;
- Queen size bed (2000*1800mm) with 970lt storage underneath;
- TV up to 65" (OPT);
- Wide new shaped windows;
- Extra sized rectangular shaped openable porthole on each side;

2. STD - STARBOARD SIDE GUEST CABIN

- Two separate single beds with private en suite head;
- Rectangular shaped openable porthole;
- TV up to 24" (OPT);
- Guest head with double accesses which can be used as a day head;

3. VIP CABIN

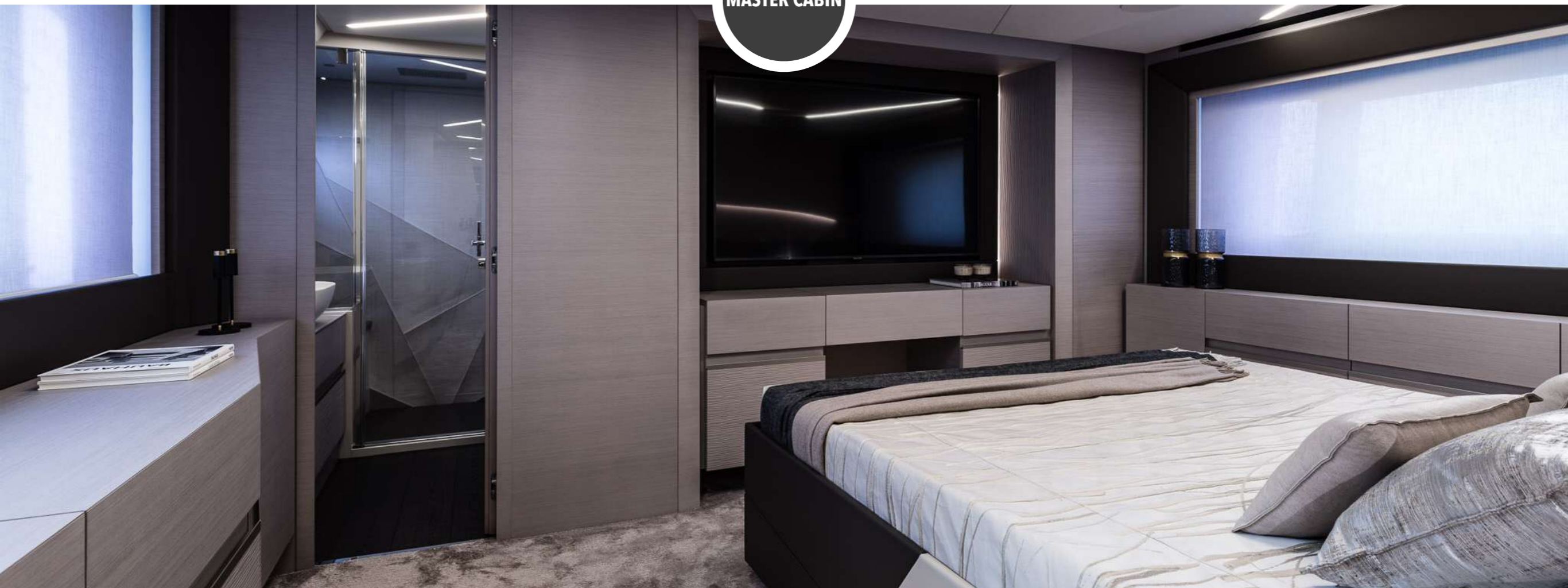
- Double bed with 480lt storage underneath and en suite head;
- TV up to 43" (OPT);
- Rectangular shaped openable porthole;

4. OPT - LD SALON 7,3m²

- L shaped sofa with dining table;
- Day head;



MASTER CABIN





PORTHOLE

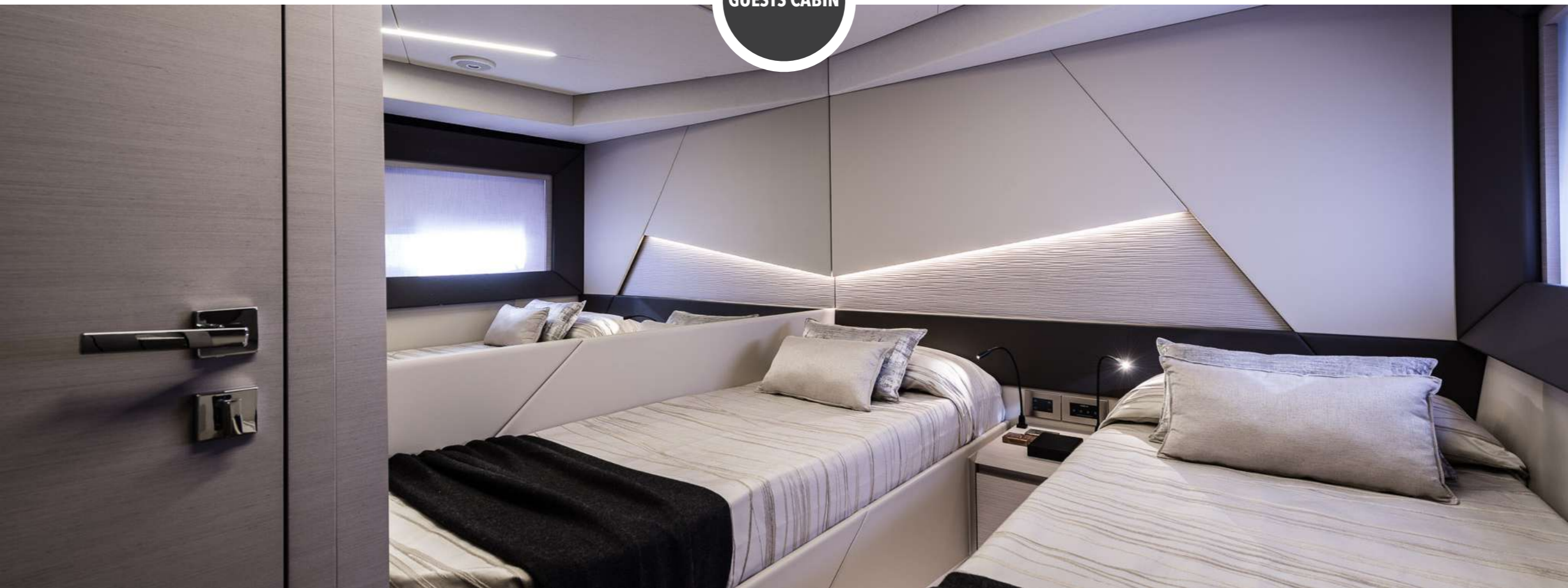


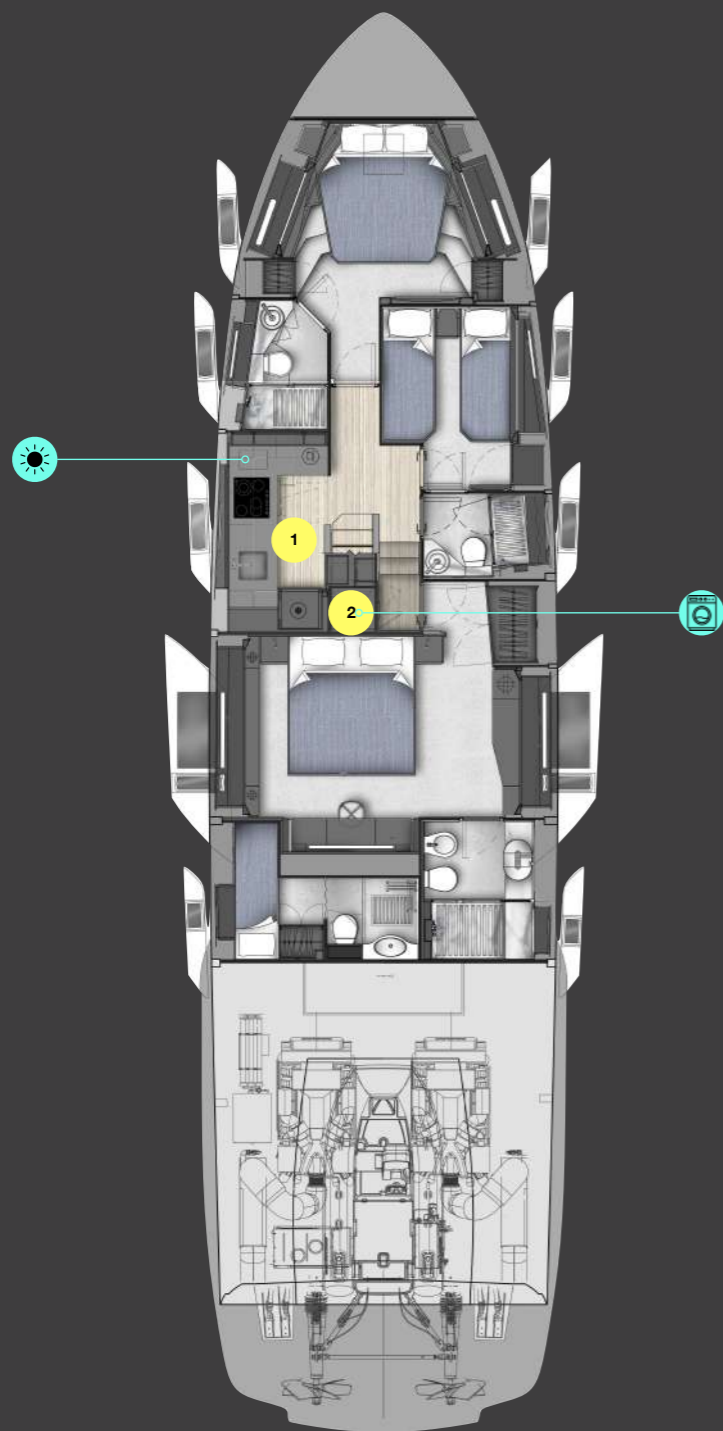


MASTER HEAD



GUESTS CABIN





LOWER DECK

GALLEY+LOBBY

5,8m²

1. GALLEY

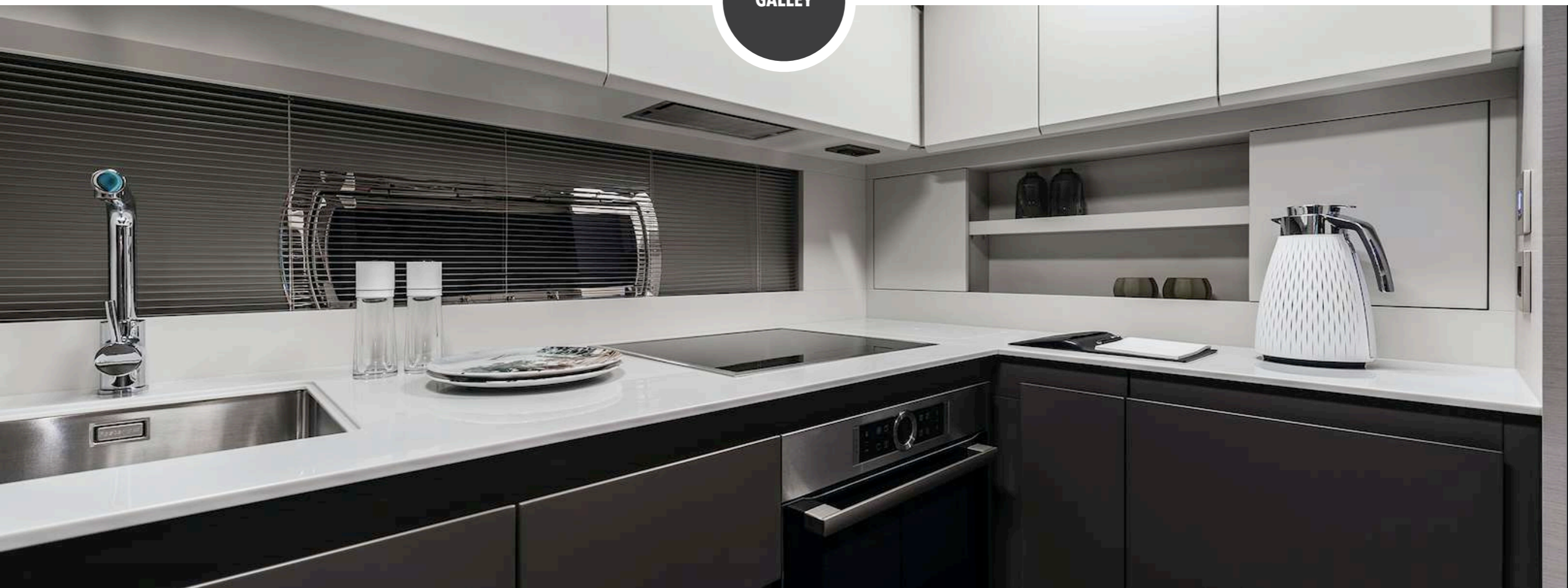
- STD: Fridge + Dishwasher + Oven + 4 Ceramic hobs;
- Fridge full height 255lt;
- Skylight for extra natural light;
- Large storage for galley equipments;
- Extra sized rectangular shaped openable porthole;

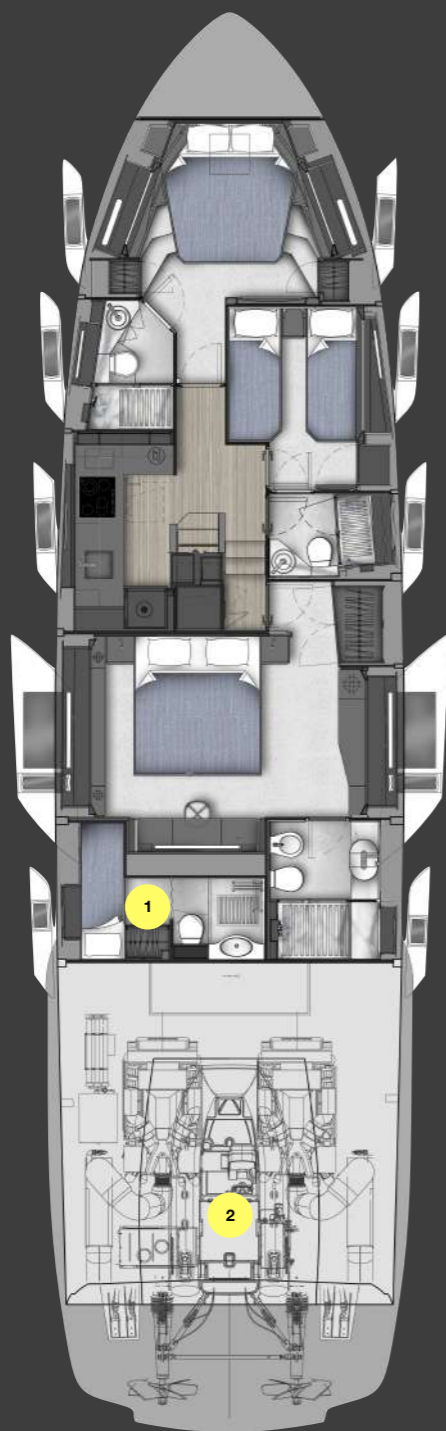
2. LOBBY

- Dryer & washing machine (OPT);



GALLEY





LOWER DECK

CREW CABIN

3,8m²

GARAGE

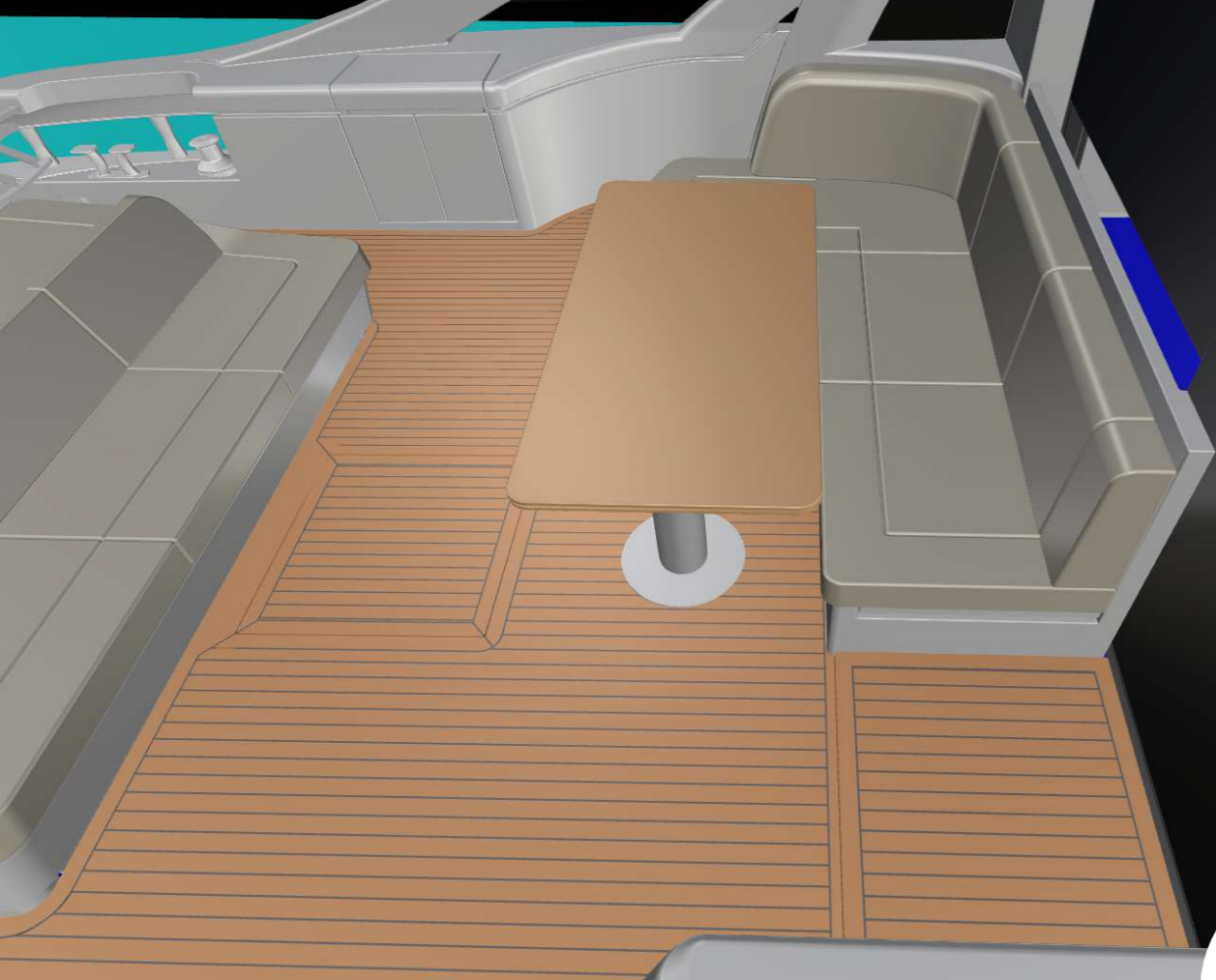
8,8m²

1. CREW CABIN

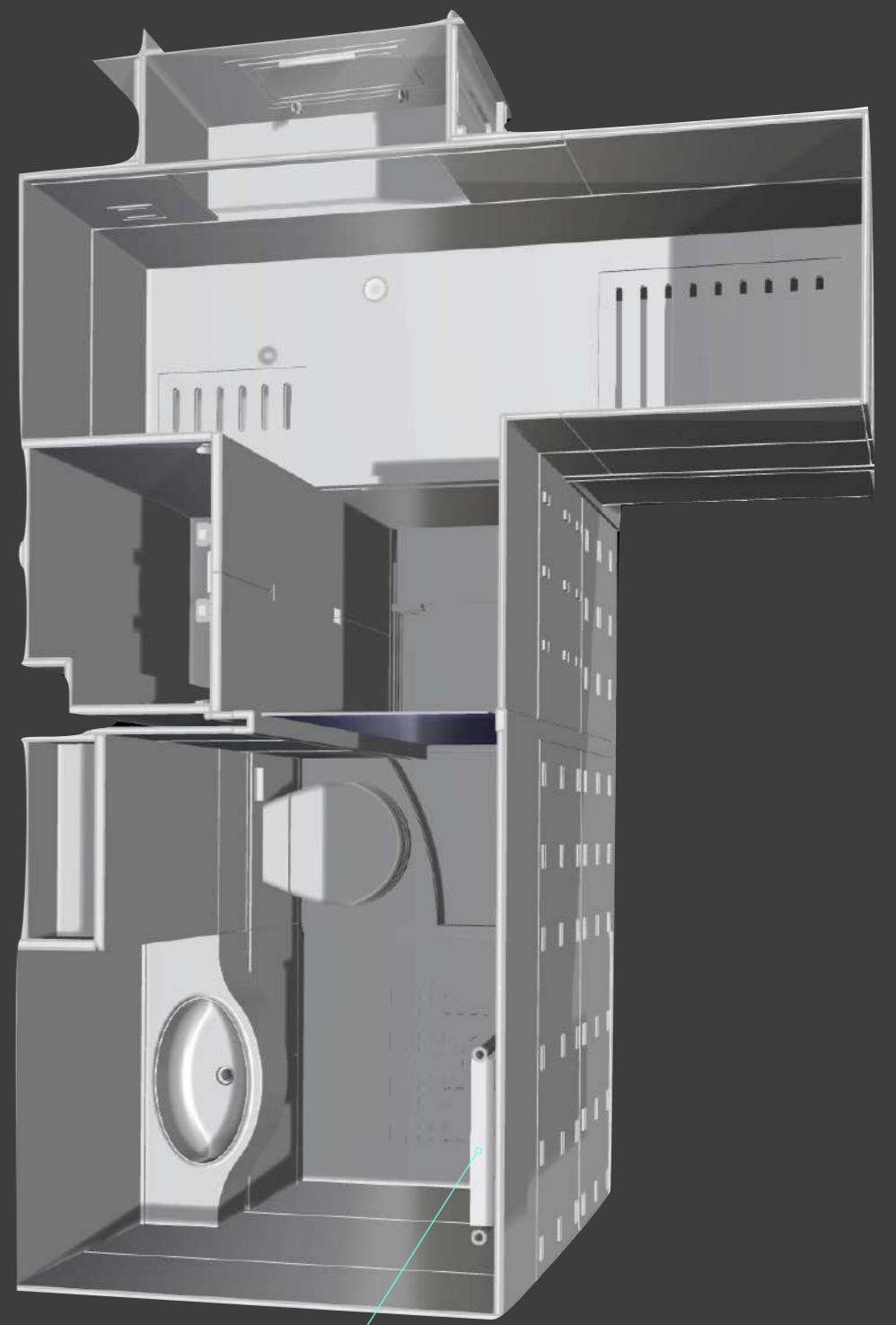
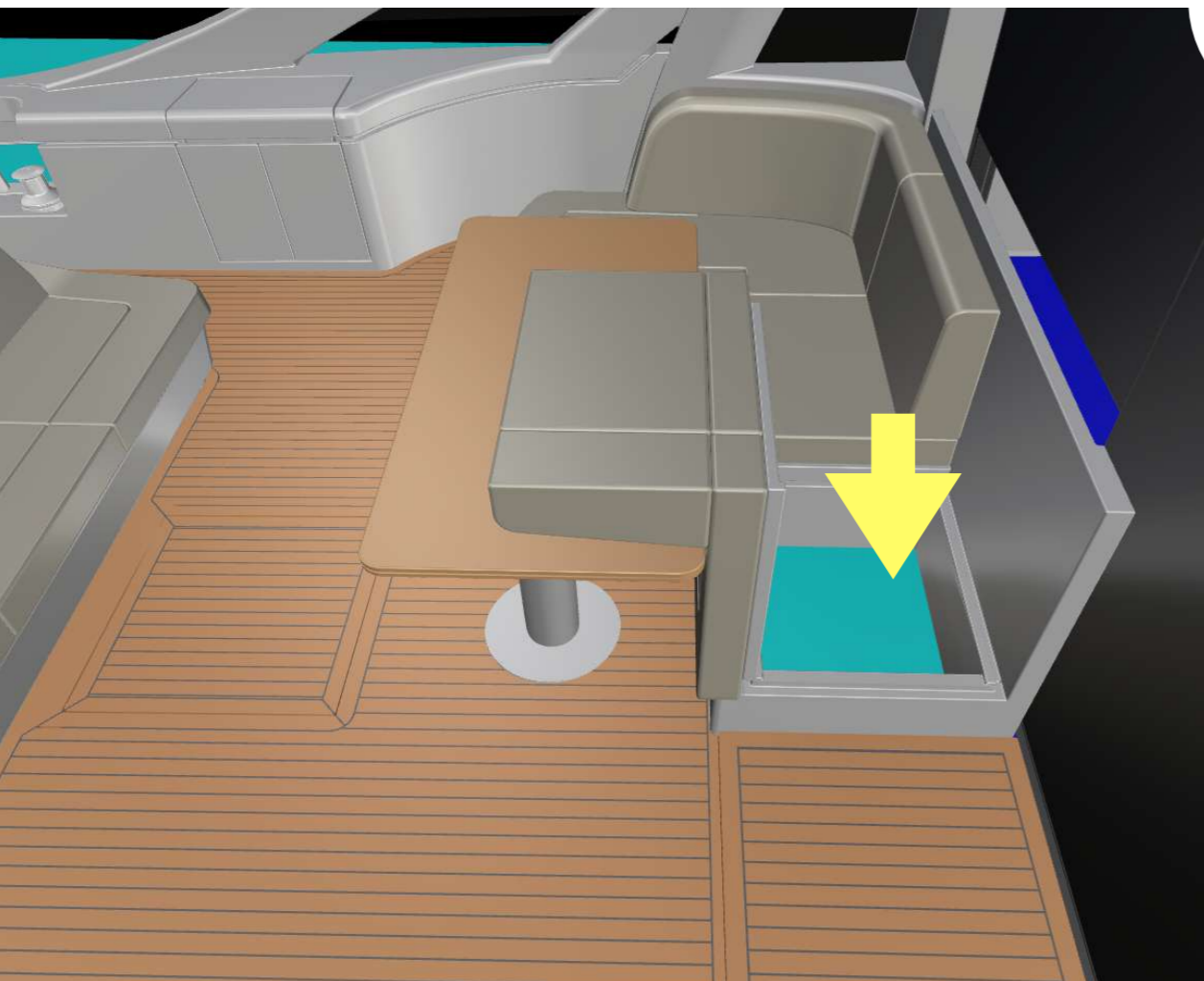
- Access from main deck cockpit;
- Single bed with head;

2. GARAGE

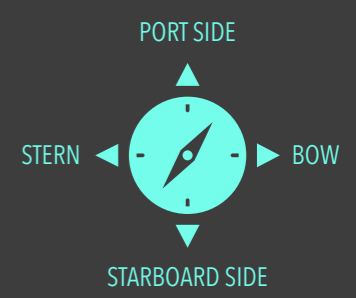
- Hydraulic tilting down platform for tender launching;
- Tender Williams up to W345 (OPT);



**CREW AREA
ACCESS**



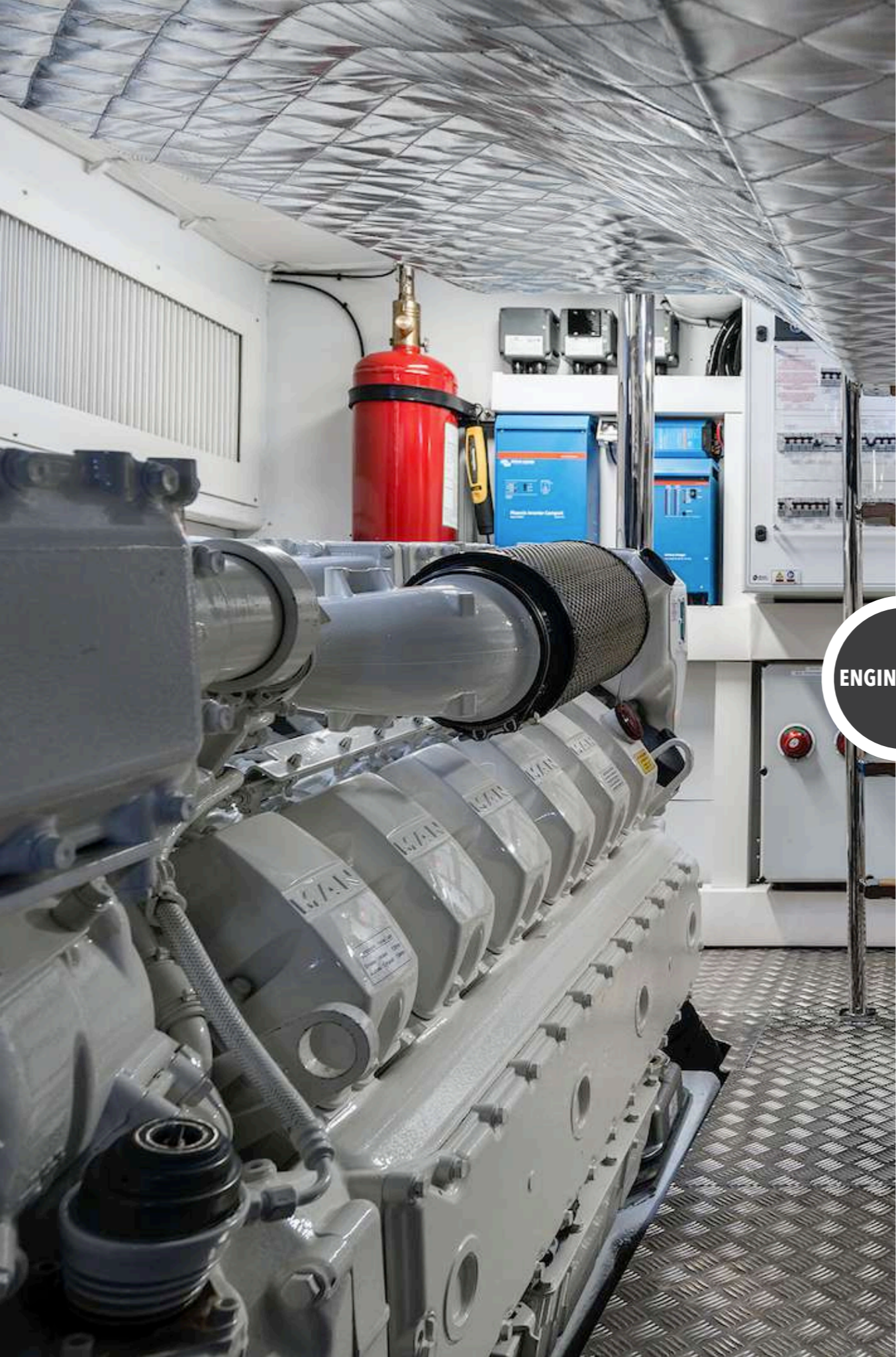
CREW CABIN
ENTRANCE STAIRS



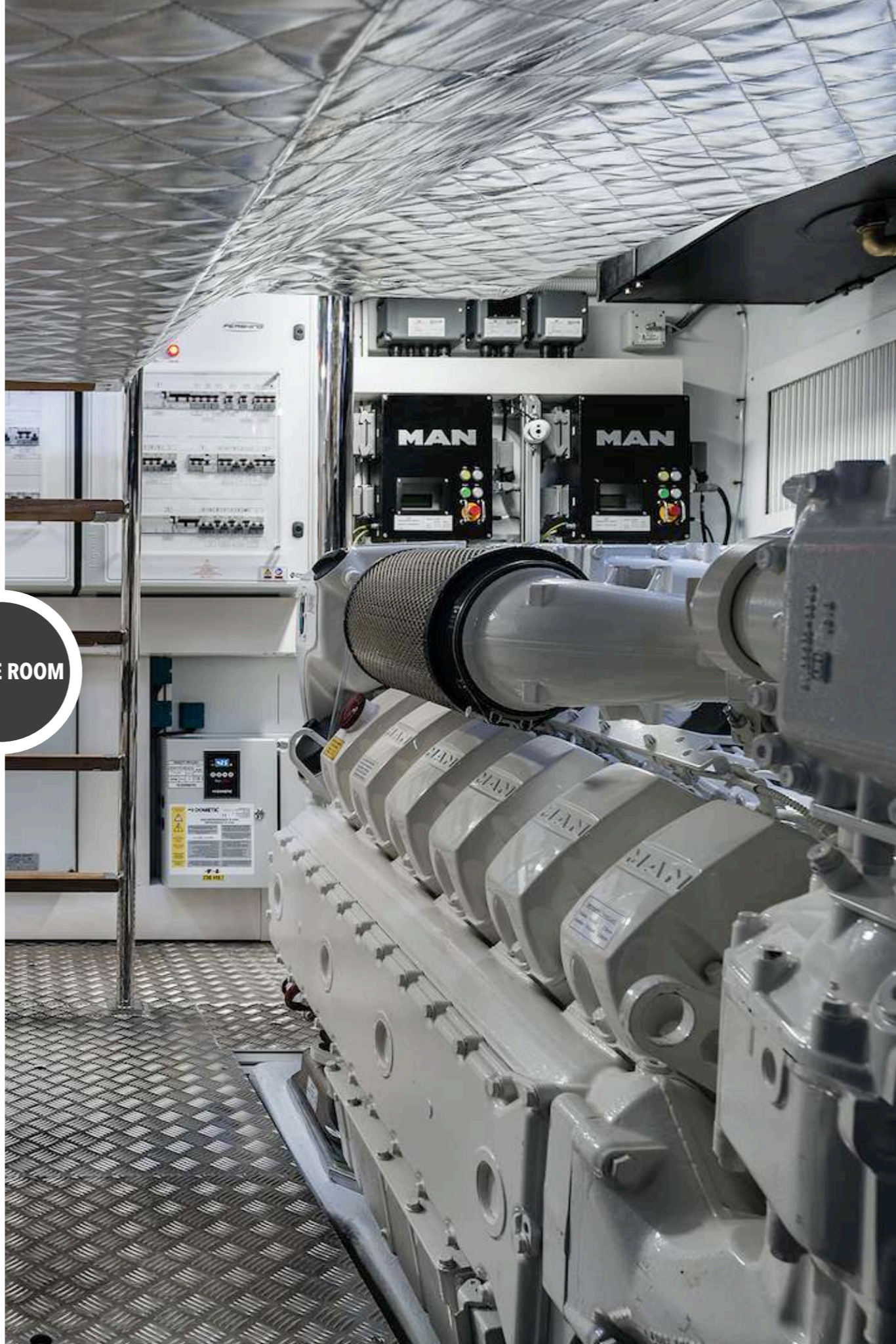


GARAGE





ENGINE ROOM





**MAIN AREA
SQM**

EXTERIOR DECK AREA (SQM)		PERSHING 7X
MAIN DECK	BOW LIVING AREA	5,6
MAIN DECK	COCKPIT	19
INTERIOR DECK AREA (SQM)		PERSHING 7X
MAIN DECK	WHEELHOUSE	INCLUDED
MAIN DECK	MAIN SALON	12,5
LOWER DECK	GALLEY + LOBBY	5,8
LOWER DECK	OWNER'S CABIN	12,8
LOWER DECK	OWNER'S HEAD	3,3
LOWER DECK	CREW AREA	3,8
LOWER DECK	AFT GARAGE	8,8
LOWER DECK	BEACH AREA	7
LOWER DECK	GUEST CABINS + HEADS	16,2
TOTAL BY DECK AREA (SQM)		PERSHING 7X
LOWER DECK	INTERIOR	50,7
LOWER DECK	INTERIOR	7
MAIN DECK	INTERIOR	12,5
MAIN DECK	EXTERIOR	24,6
TOTAL BY AREA (SQM)		PERSHING 7X
TOTAL	INTERIOR	63,2
TOTAL	EXTERIOR	31,6



PERSHING